

SUPPLEMENTARY MATERIALS

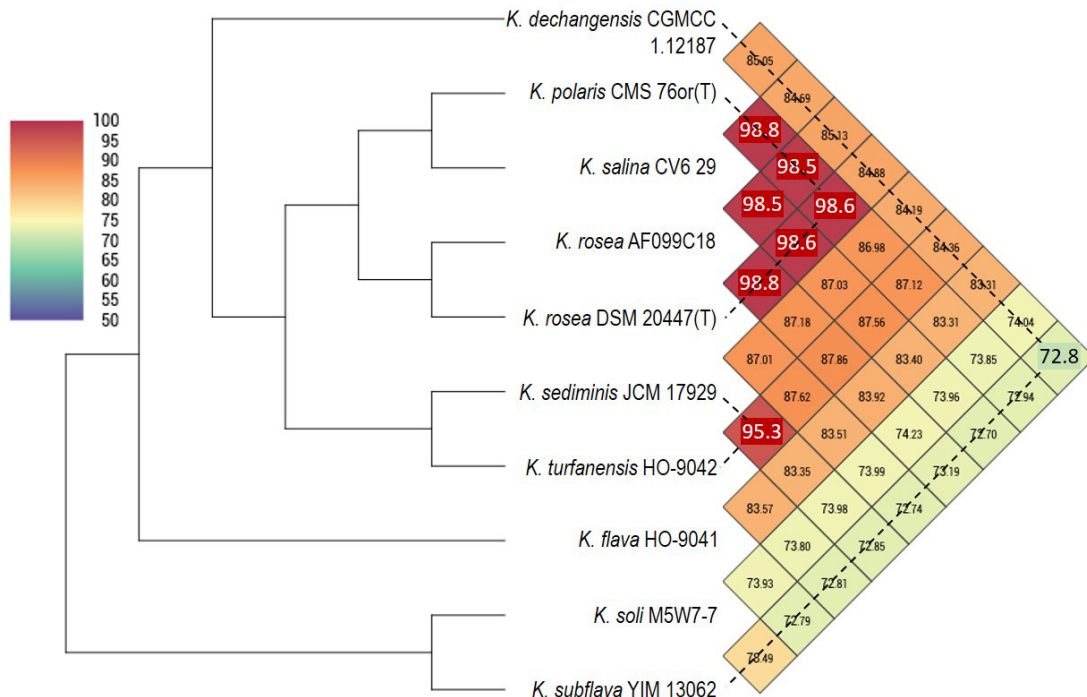
to the article by S.Yu. Shchyogolev, G.L. Burygin, L.A. Dykman, and L.Yu. Matora

“Phylogenetic and pangenomic analyses of members of the family *Micrococcaceae* related to a plant-growth-promoting rhizobacterium isolated from the rhizosphere of potato (*Solanum tuberosum* L.)”

Supplementary Material 1. Characteristics of *Kocuria* strains closely related to *K. rosea* RCAM04488 (ITS1 test)

No.	Strain	GenBank accession	Isolation source
1	<i>K. flava</i> HO-9041 ^T	GCF_001482365.1	Air in Xinjiang, China
2	<i>K. turfanensis</i> HO-9042 ^T	GCF_001580365.1	Desert air in Xinjiang, China
3	<i>K. sediminis</i> JCM 17929 ^T	GCF_009735315.1	Marine sediments, India
4	<i>K. dechangensis</i> CGMCC 1.12187 ^T	GCF_014636775.1	Global Catalogue of Microorganisms (GCM) collection, China
5	<i>K. salina</i> CV6	GCF_013368965.1	Roots of <i>Cistanche violacea</i> , Tunisia
6	<i>K. rosea</i> DSM 20447 ^T	GCF_006717035.1	Collection of 1,000 actinobacterial strains, USA
7	<i>K. polaris</i> CMS 76or ^T	GCF_000786195.1	Cyanobacterial mat, Antarctica
8	<i>K. rosea</i> AF099C18	GCF_004799725.1	Indoor dust, USA
9	<i>K. palustris</i> F5_7S_P11C	GCF_017167825.1	International Space Station
10	<i>K. soli</i> M5W7-7 ^T	GCF_003797835.1	Soil, China
11	<i>K. subflava</i> YIM 13062 ^T	GCF_012163155.1	Oceanic marine sediments, Indian Ocean
12	<i>K. coralli</i> SCSIO 13007 ^T	GCF_008831305.1	Coral reef seawater, China
13	<i>K. rosea</i> ATCC 186 ^T	GCF_006094695.1	Aquarium with goldfish, USA

Supplementary Material 2. OrthoANI (UPGMA) dendrogram combined with the heat map¹



Dashed lines connect the names of strain pairs taken for example with their corresponding ANI values.

¹ OAT. URL: <https://www.ezbiocloud.net/tools/orthoani>. Accessed 09/06/2023.

Supplementary Material 3. Characteristics of *Kocuria* strains included in the “Reference genomes” category of the bacterial genome database²

No.	Strain	GenBank accession	Isolation source
1	<i>K. carniphila</i> CCM 132 ^T	GCA_004136555.1	Uropygial gland of the great spotted woodpecker (<i>Dendrocopos major</i>), Slovakia
2	<i>K. coralli</i> SCSIO 13007 ^T	GCA_008831305.1	Coral reef seawater, China
3	<i>K. dechangensis</i> CGMCC 1.12187 ^T	GCF_014636775.1	Global Catalogue of Microorganisms (GCM) collection, China
4	<i>K. flava</i> HO-9041 ^T	GCF_001482365.1	Air in Xinjiang, China
5	<i>K. indica</i> CE7	GCA_004328535.1	Human skin swab, South Korea
6	<i>K. marina</i> p3-SID866	GCA_025145565.1	Human antecubital fossa swab, USA
7	<i>K. massiliensis</i> Marseille-P3598 ^T	GCA_900169715.1	Wound in a human lower extremity, France
8	<i>K. oceani</i> FXJ8.057	GCA_029524215.1	Deep-sea hydrothermal plume, Indian Ocean
9	<i>K. palustris</i> MU14/1	GCA_001275345.1	Culture contaminant, USA
10	<i>K. polaris</i> CMS 76or ^T	GCA_000786195.1	Cyanobacterial mat, Antarctica
11	<i>K. rhizophila</i> 4R-31	GCA_004563945.1	Alder root nodule, USA
12	<i>K. rosea</i> S-A3	GCA_004358895.1	Coalvale silty clay, USA
13	<i>K. salsicia</i> DE0232	GCA_007681555.1	Environmental (Durham, USA)
14	<i>K. sediminis</i> JCM 17929 ^T	GCF_009735315.1	Marine sediments, India
15	<i>K. soli</i> M5W7-7 ^T	GCA_003797835.1	Soil, China
16	<i>K. subflava</i> YIM 13062 ^T	GCA_012163155.1	Oceanic marine sediments, Indian Ocean
17	<i>K. turfanesis</i> HO-9042 ^T	GCA_001580365.1	Desert air in Xinjiang, China
18	<i>K. tytonicola</i> 473	GCA_003687175.1	American barn owl (<i>Tyto furcata</i>), Germany
19	<i>K. tytonis</i> 442 ^T	GCA_003226895.2	Uropygial gland of the American barn owl (<i>Tyto furcata</i>), Germany
20	<i>K. varians</i> NBRC 15358 ^T	GCA_006539885.1	Milk, Japan

² Genome. <https://www.ncbi.nlm.nih.gov/datasets/genome>. Accessed 09/06/2023.

Supplementary Material 4. Characteristics of *Arthrobacter* strains closely related to *Kocuria* in the AAI-profiler test (AAI > 65 %) and included in the “Reference genome” category of the bacterial genome database³

No.	Strain	GenBank accession	MF/AAI (%)	Isolation source
1	<i>A. agilis</i> TMP24	GCA_028736055.1	0.32/67	Meltwater, Antarctica
2	<i>A. bussei</i> KR32 ^T	GCA_009377195.2	0.22/66	Mountain cheese, Germany
3	<i>A. crusticola</i> SLN-3 ^T	GCA_004357995.1	0.23/67	Soil, China
4	<i>A. crystallopietes</i> DSM 20117 ^T	GCA_002849715.1	0.28/68	Soil, South Korea
5	<i>A. cupressi</i> CGMCC 1.10783 ^T	GCA_900099975.1	0.20/67	<i>Cupressus sempervirens</i> rhizosphere, China
6	<i>A. echini</i> AM23 ^T	GCA_004803505.1	0.25/67	<i>Heliocidaris crassispina</i> intestine, Republic of Korea
7	<i>A. globiformis</i> NBRC 12137 ^T	GCA_000238915.2	0.25/67	Soil, Japan
8	<i>A. livingstonensis</i> LI2 ^T	GCA_003219815.1	0.18/66	Soil, Antarctica
9	<i>A. mobilis</i> E918 ^T	GCA_012395835.1	0.27/68	Desert soil, Pakistan
10	<i>A. nitrophenolicus</i> S-A1	GCA_004358765.1	0.28/67	Coalvale silty clay, USA
11	<i>A. oryzae</i> DSM 25586 ^T	GCA_003634095.1	0.29/67	Rice soil, Japan
12	<i>A. pigmenti</i> DSM 16403 ^T	GCA_011927905.1	0.23/67	Mural painting, biofilm, Austria
13	<i>A. pityocampae</i> Tp2 ^T	GCA_002927275.1	0.23/67	<i>Thaumetopoea pityocampa</i> larva, Turkey
14	<i>A. rhombi</i> B Ar 00.02	GCA_900163545.1	0.16/66	Greenland halibut (<i>Reinhardtius hippoglossoides</i>), France
15	<i>A. silviterrae</i> DSM 27180 ^T	GCA_011045165.1	0.18/66	Forest soil, Republic of Korea
16	<i>A. subterraneus</i> NP_1H	GCA_900099735.1	0.28/67	Shale carbon reservoir, USA
17	<i>A. terricola</i> JH1-1 ^T	GCA_004354015.1	0.21/67	Forest soil, Republic of Korea
18	<i>A. ulcerisalmonis</i> aT11b ^T	GCA_900609065.1	0.21/67	Ulcer on the body of the Atlantic salmon (<i>Salmo salar</i>), Chile
19	<i>A. woluwensis</i> NM-35	GCA_003024475.1	0.17/67	Nest of the social spider (<i>Stegodyphus dumicola</i>), Namibia
20	<i>A. yangruifuui</i> 785 ^T	GCA_009192775.1	0.24/67	Wild animals, China

³ Genome. <https://www.ncbi.nlm.nih.gov/datasets/genome>. Accessed 09/06/2023.